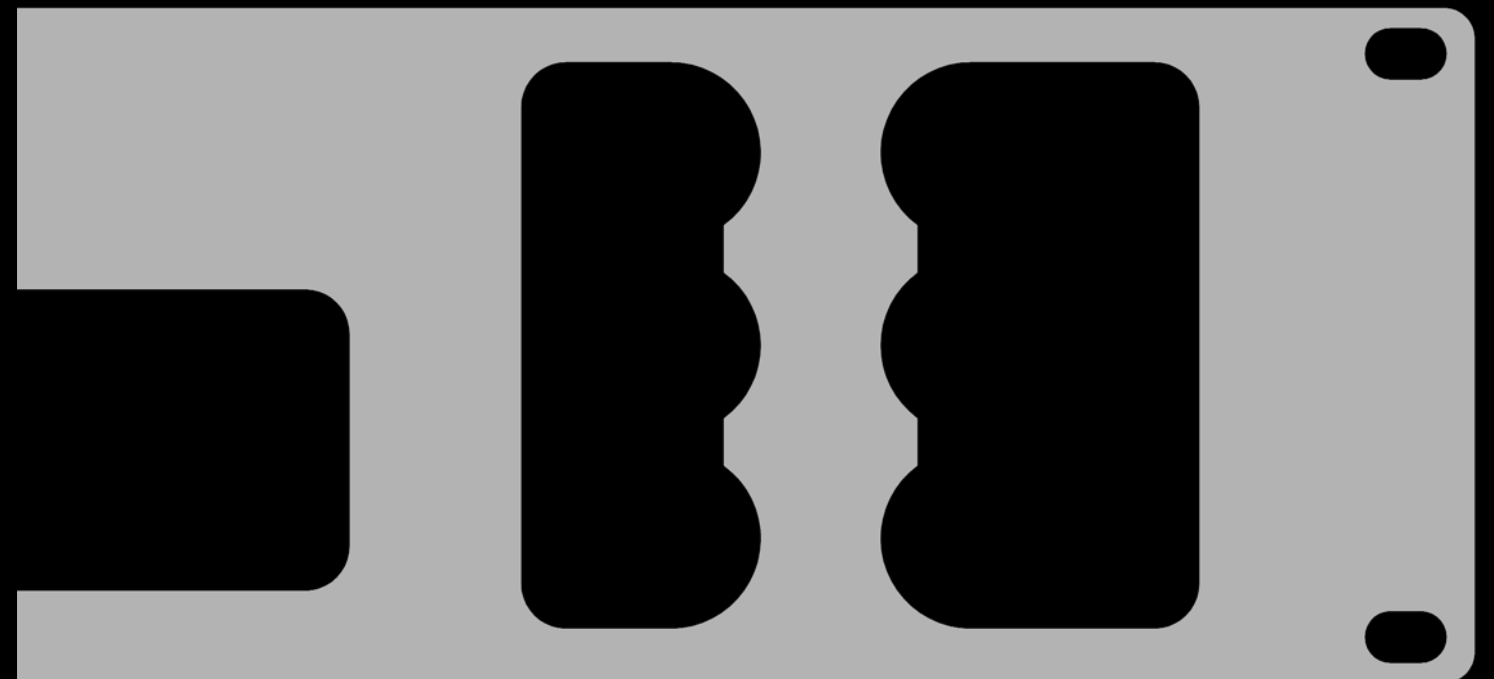
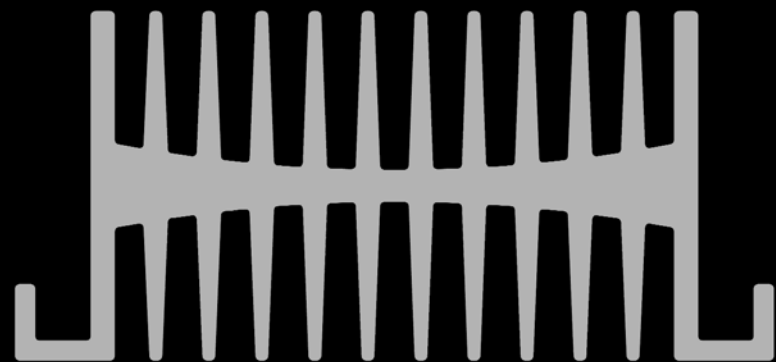


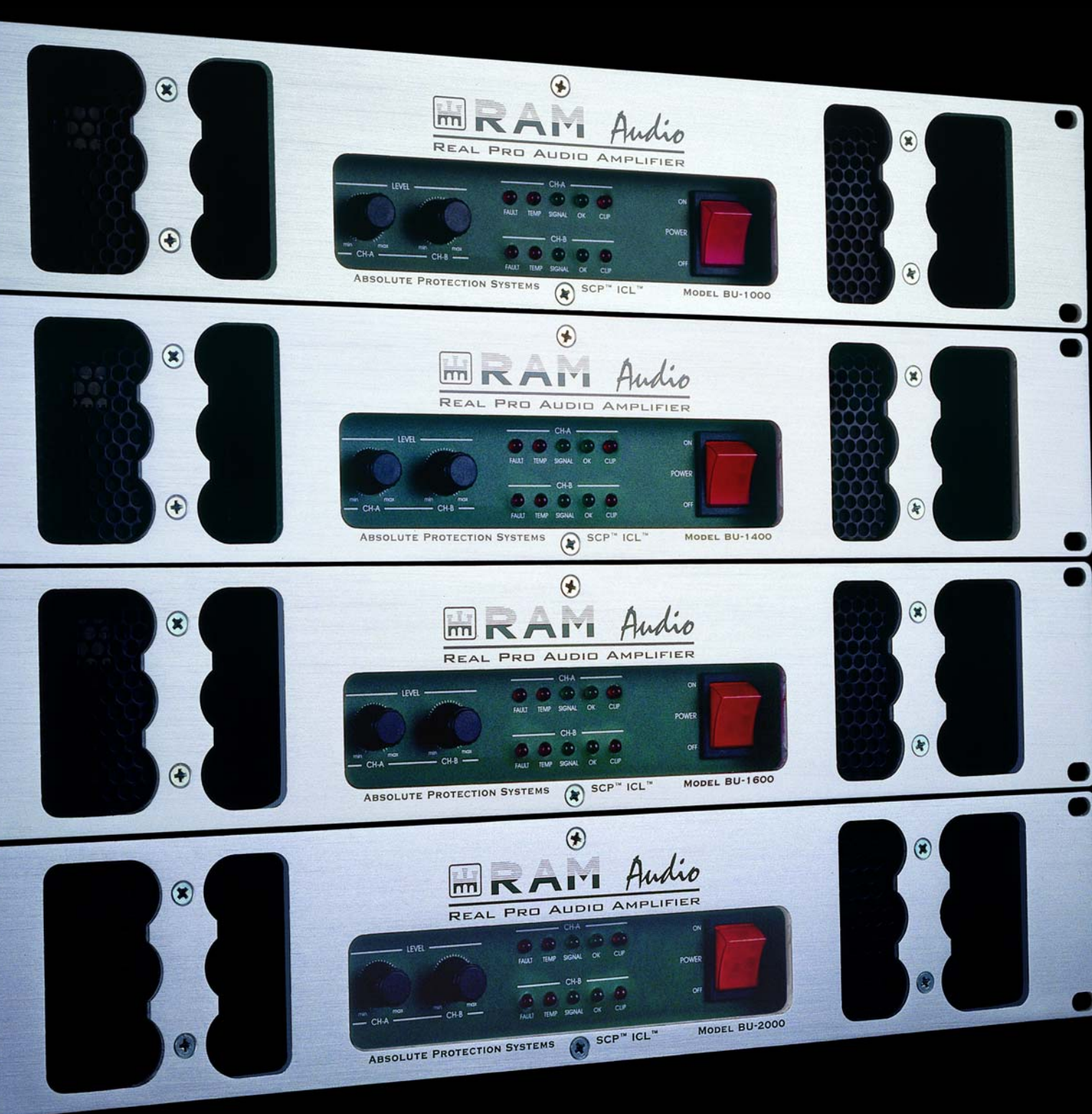
RAM *Audio*

Professional Power Amplifiers

BU SERIES

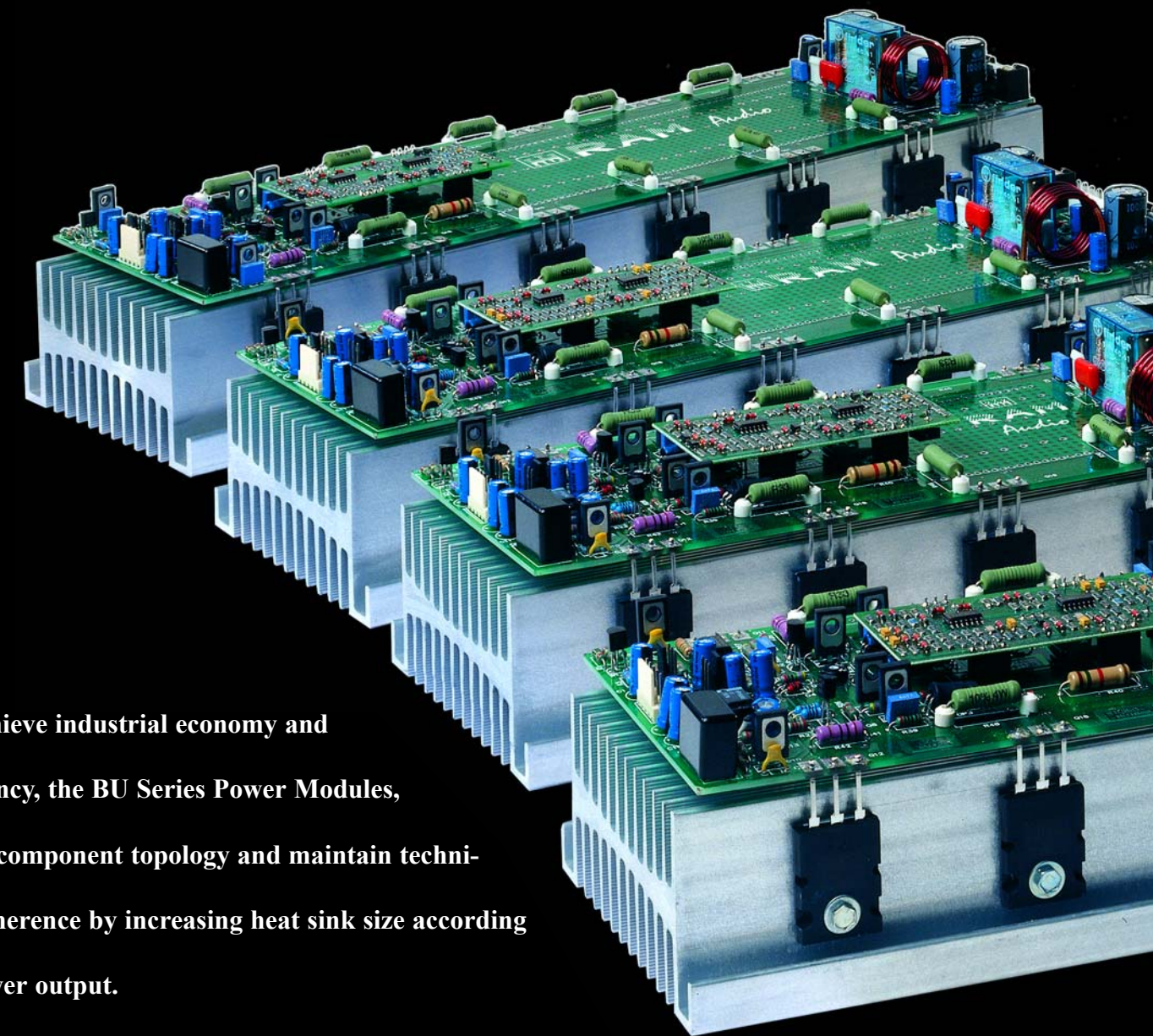


Manufactured in EU by C.E. Studio-2 s.l.
Conde Torrefiel, 89 - 46019 Valencia - SPAIN
Phone: +34 6 365 62 35 Fax: +34 6 366 31 10
<http://www.ramaudio.com> e-mail: ram@ramaudio.com



Power amplification at its best means absolutely linear handling of any complex audio signal. Our BU Series are unique, powerful amplifiers built to meet the highest professional requirements, thanks to new circuit philosophy that guarantees outstanding performance with field proven reliability.

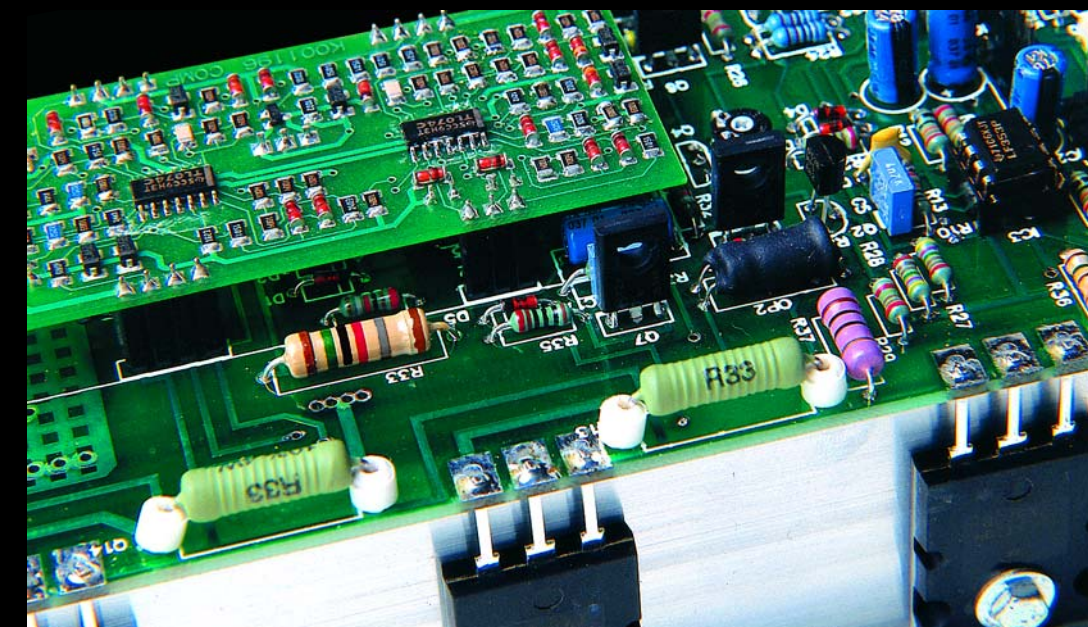
With these qualities, RAM Audio units outperform most modern amplifiers in terms of technical specs and pure sonic performance.

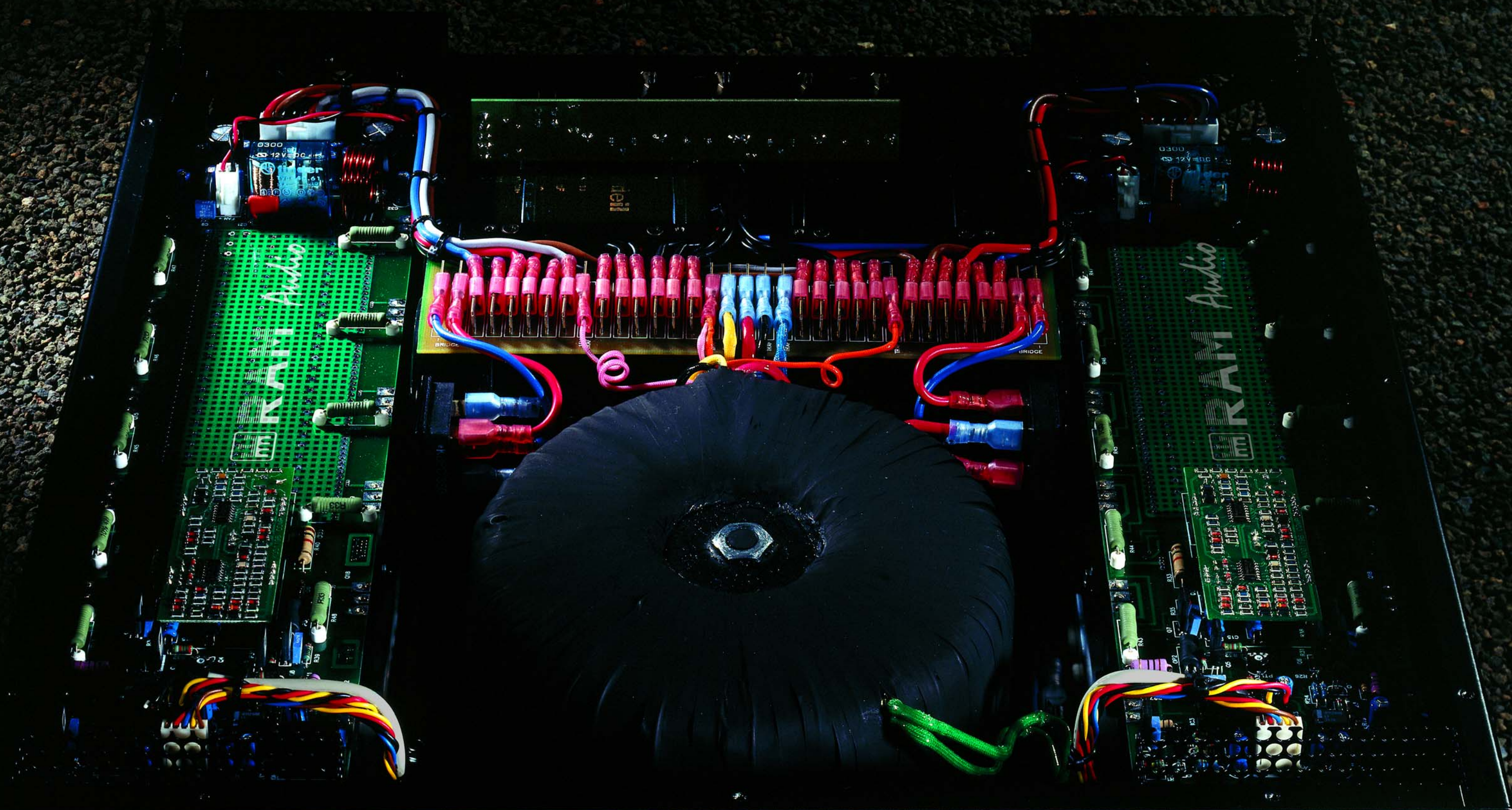


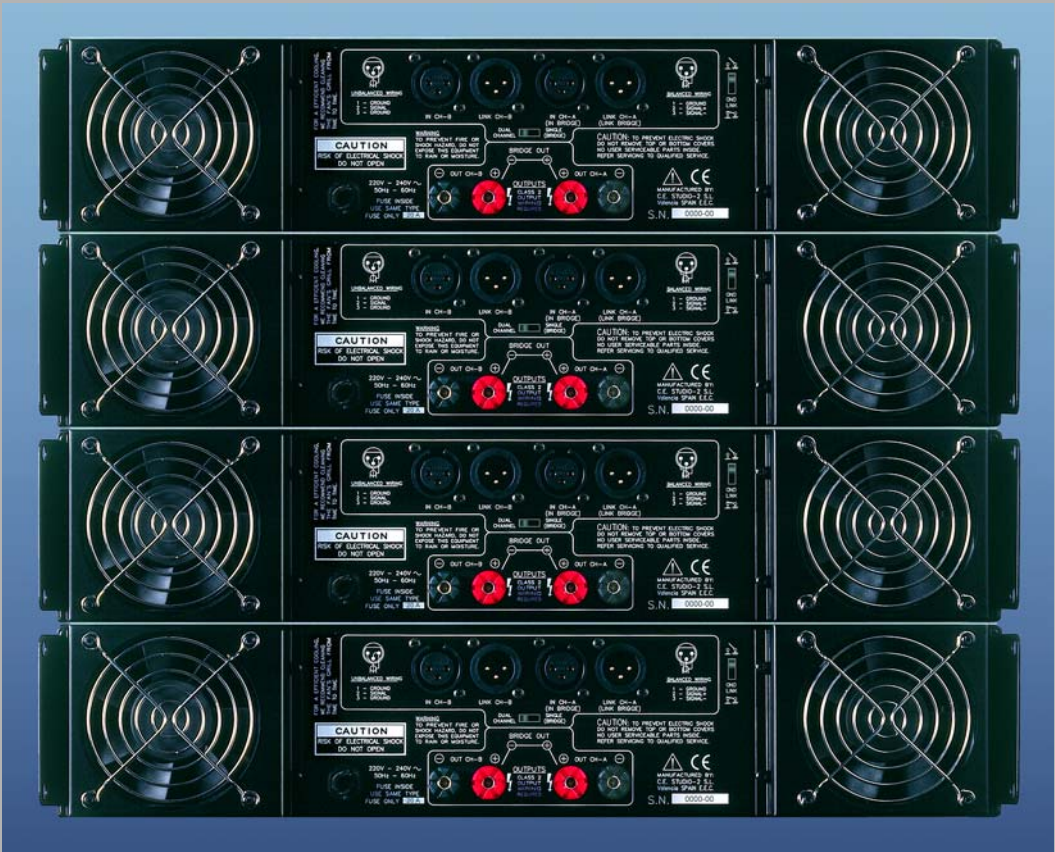
To achieve industrial economy and efficiency, the BU Series Power Modules, share component topology and maintain technical coherence by increasing heat sink size according to power output.

BU Series have been designed giving extreme attention to all production steps from the engineering stand point. All boards are naturally double sided

platethrough fiber-glass. Most advanced SMT circuits are used for overall reliability, ease of assembly and full field servicing.







BU Series feature a novel and unparalleled protection developed by RAM Audio that enables the amplifiers to withstand any load short circuit however long its duration may be. Our SCP™ protect the amps at low or full power and maintain perfect stability. Furthermore this safety circuit offers perfect output signal with reactive loads throughout its audible frequency range.

Features

- 2U high, heavy duty custom alloy chassis
- Modular construction for easy servicing
- Symmetrical layout for even weight distribution
- High efficiency toroidal main transformer
- Oversized, high energy, linear power supply
- Dual or bridged operation
- Twin balanced inputs (Neutrik® XLR connectors)
- 41 step detented input attenuators
- High quality components used throughout
- Efficient back to front cooling
- Dual, continuously variable speed axial fans
- Output fault, signal, and clip indicators

Protections

- Calibrated mains fuse
- Independent channel supply fuses
- Input signal muting at turn on
- Permanent short-circuit protection (SCP™)
- Thermal overload protection
- Intelligent clip-limiter (ICL™)



Receased carrying handle detail

Technical Specifications

	BU-1000	BU-1400	BU-1600	BU-2000
Output Power				
FTC 0.1% THD+N				
@ 8 ohms	340 watts	400 watts	475 watts	550 watts
@ 4 ohms	475 watts	650 watts	750 watts	950 watts
Bridge @ 8 ohms	970 watts	1360 watts	1550 watts	1960 watts
Frequency Response				
@ 1 watt ±0.25dB	20Hz-20kHz	20Hz-20kHz	20Hz-20kHz	20Hz-20kHz
@ 1 watt -3dB	7Hz-100kHz	7Hz-100kHz	7Hz-100kHz	7Hz-100kHz
Phase Response				
@ 1 watt 20Hz-20kHz	±15 deg	±15 deg	±15 deg	±15 deg
Total Harmonic Distortion				
20Hz-2kHz at full power	<0.01%	<0.01%	<0.01%	<0.01%
2kHz-20kHz at full power	<0.1%	<0.1%	<0.1%	<0.1%
Intermodulation Distortion				
SMPTE	<0.05%	<0.05%	<0.05%	<0.05%
Crosstalk				
20Hz-2kHz	>80 dB	>80 dB	>80 dB	>80 dB
2kHz-20kHz	>70 dB	>70 dB	>70 dB	>70 dB
Slew Rate	>65 V/μs	>65 V/μs	>65 V/μs	>65 V/μs
Damping Factor				
20Hz-1kHz	>800	>800	>800	>800
Voltage Gain	33.1 dB	33.1 dB	33.1 dB	33.1 dB
Sensitivity				
@ 4 ohms	0.96 V	1.1 V	1.15 V	1.33 V
Signal-to-Noise Ratio				
A weighted	112 dB	113 dB	113.5 dB	115 dB
No weighting	99.5 dB	100.5 dB	101 dB	103 dB
Required AC Mains				
220 V - 50 Hz (idle)	0.3A	0.3A	0.3A	0.3A
@ 4 ohms (rated power)	9.5 A	11.2 A	12.5 A	15 A
Dimensions				
W x H x D (mm)	483x89x442	483x89x442	483x89x442	483x89x442
W x H x D (inches)	19x3.5x17.4	19x3.5x17.4	19x3.5x17.4	19x3.5x17.4
Weight				
Shipping	15.8Kg-7.2Lbs	21.3Kg-9.7Lbs	21.8Kg-9.9Lbs	22.8Kg-10.4Lbs
Net	14.0Kg-6.4Lbs	19.5Kg-8.9Lbs	20.0Kg-9.1Lbs	21Kg-9.5Lbs